

Corporate Presentation
March 2016

Our Vision Is ...

... To Exceed Customer Expectations, Globally

SAL GROUP (www.sigma-asl.com)

- SPS
Waterworks Company for Valve & Fitting solutions
- SAL
Automotive product solutions for passenger cars, commercial vehicle, agriculture, construction & industrial equipment
 - ✓ SAL : Global SCM
 - ✓ SMS : OEM Manufacturing & Logistics (www.sms-korea.co.kr)

Truck

Automotive

Agriculture

Construction

Waterworks



Company History

- 1994:** **ASL (Automotive Supply Limited)** established by Tony Elliott in UK
- 1998:** Began supply to **Eaton Europe** (UK, France and Poland)
- 1999 :** **SAL (Sigma ASL Limited)** born by partnership with Sigma corporation in USA
- 2000:** Began supply to **Eaton Truck, USA**
- 2005:** Began supply to **Eaton Clutch, USA**
- 2007:** Commencement of **Eaton supercharger** projects
Established manufacturing facility in Korea – **SMS**
- 2009:** Acquisition of **TS-16949** certificate – SMS & SAL Korea
- 2010:** Began supply of **Hybrid Motor & Clutch HSG** to Eaton Truck
- 2013:** Began supply of **Oil pump** to Eaton Truck - SMS
- 2014:** New projects awarded from **Eaton Cooper and Akebono Brake**
- 2015:** Joined **Eaton's new supercharger** projects (GM LT4 and JAG V6)

Leadership Members

“We strive to provide our customers with a long term service which adds maximum value at least cost.”

“We enjoy challenge and act with creativity and initiative for the benefit of our partners and ourselves.”

Tony Elliott
The SAL Group



COO (SAL)

COO (SPS)

CFO

Shang Kim



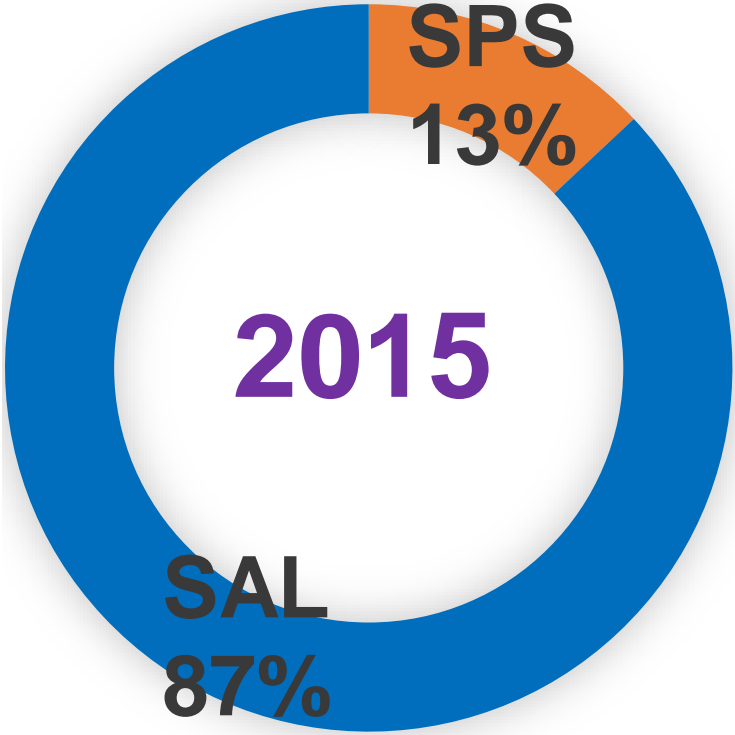
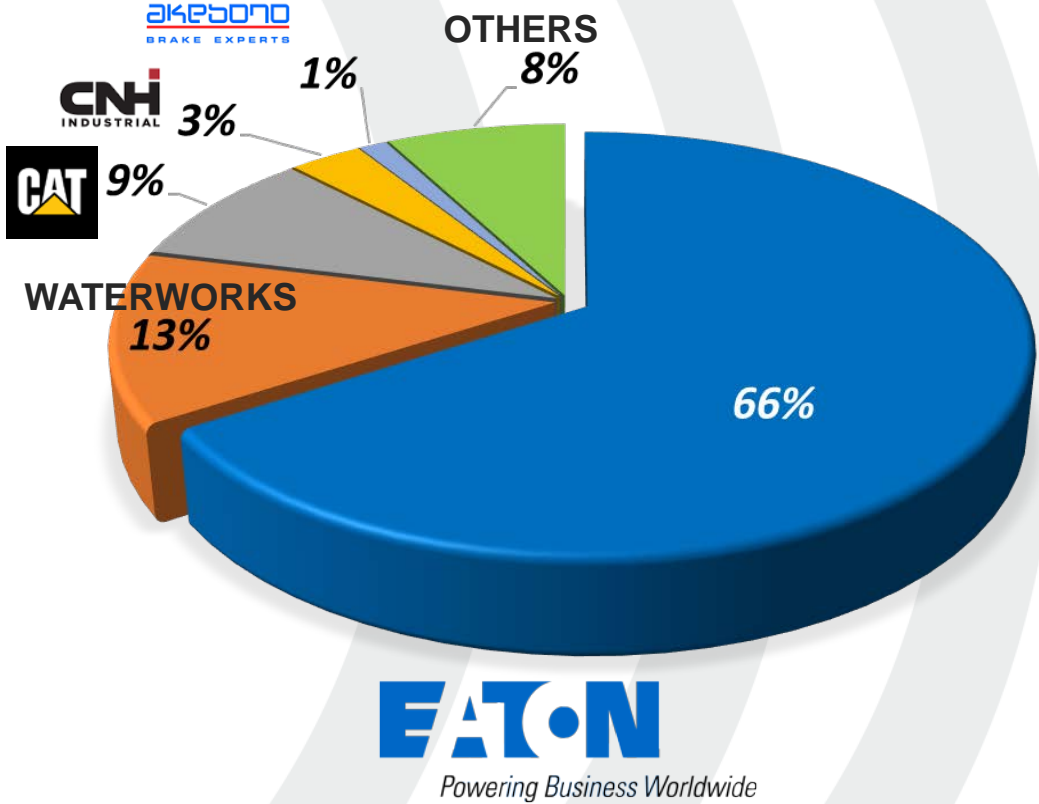
Paul Hancock



Nick Goldstone



SAL Group Sales In 2015



GENERAL INFORMATION

SAL

www.sigma-asl.com

Our Global Reach



Poland Office
Gdansk

Italy office
Torino

India office
Mumbai

Korea office
Seoul

China office
Shanghai

Warehouse
MSW Indianapolis

Warehouse
IMPULSE Texas Warehouse

SAL HQ & Warehouse Sigma house

39-41 Progress Road Leigh-on-Sea, Essex SS9 5PR, UK

SAL Manufacturing Facility Busan(SMS)

Sigma Manufacturing Solutions
Busan Korea

Organization

Shang Y. Kim

Jeff Bae

SCM

Jeff Bae

PM - John Park

Jin Kim, Hanbin Im, WS Lee,
JW Jung

Quality – James Kim

Brad Bae, HS Ko

HR – Ha Lee

IT – Young Son

KS Kang

SALES

Kira Hong

SALES

- **Italy**
Giorgio Saretto
- **Europe**
Greg Lynch
- **Germany & Scandinavia**
Slawomir Zalewski
- **Korea**
Becky Kim

Cost – Minsu Jung

JY Yang

LOGISTICS

JB

Logistics

Paul Dare
Tiffany Han
Louis Moon
John Cevizli
Hattie Xu
Hayley Brown

Delivering Solid Growth

SAL 3 Year Sales Transformation

2015

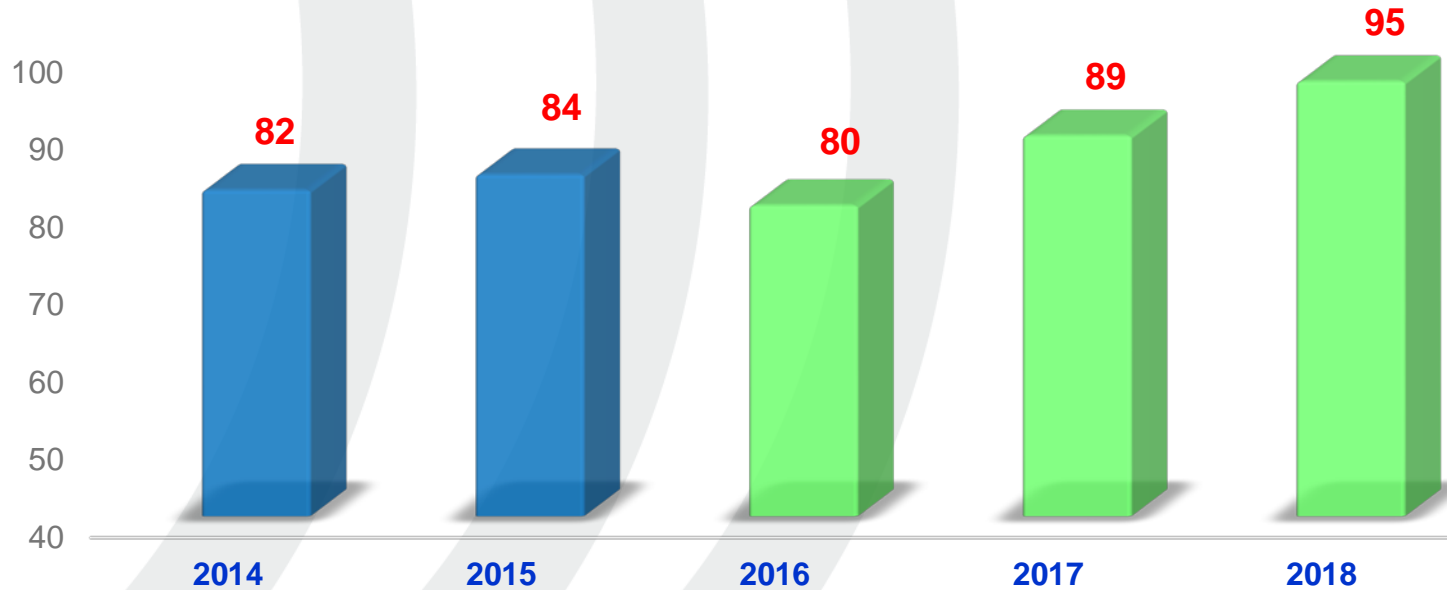
2018

Revenue

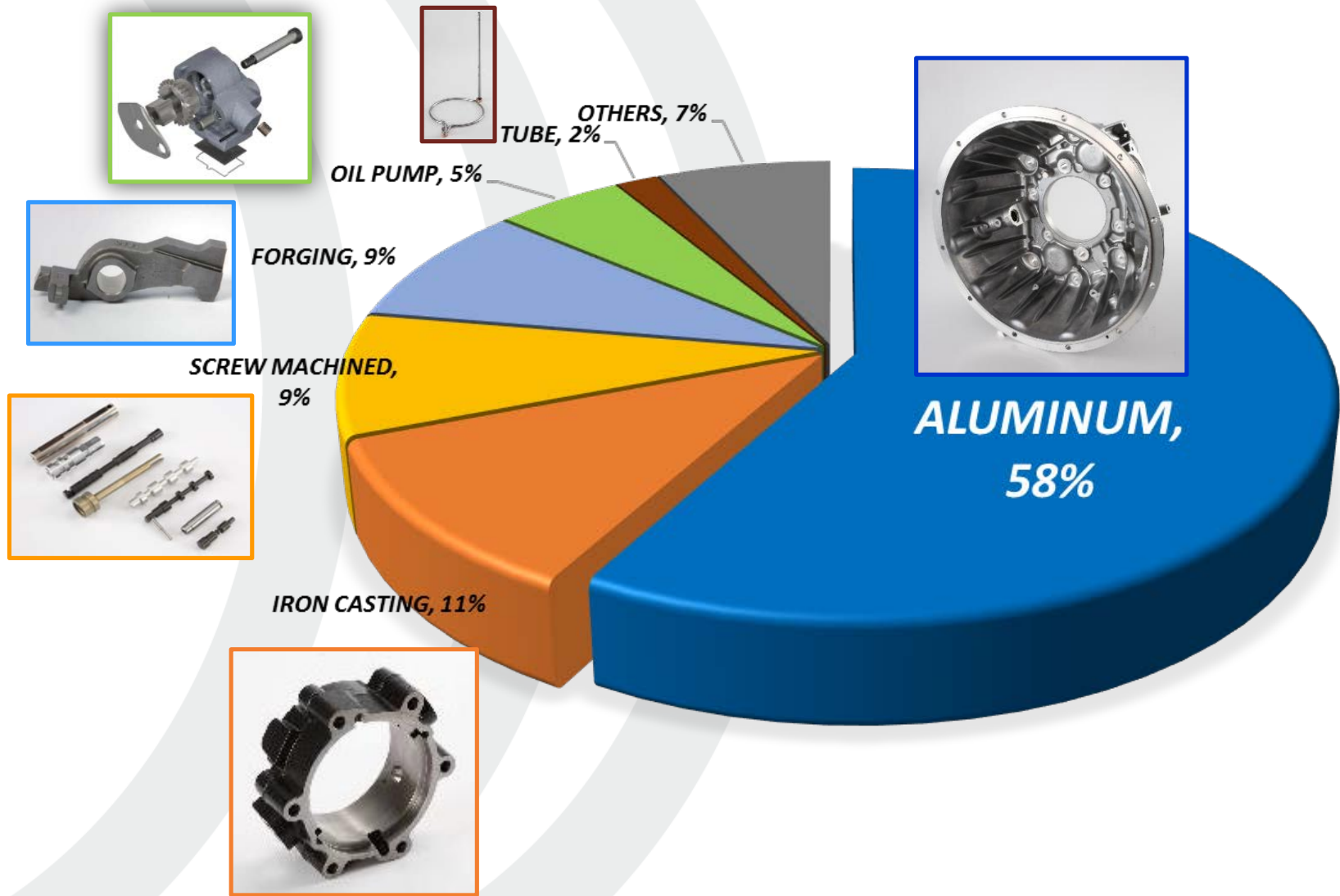
\$ 84 million

>

\$ 95 million



Commodity Breakdown



Our Strategic Focus

- Continued **Expansion** in developing new customers
- Continued technology & service **Innovation**
- **Integration** of solutions for greater operational efficiency and client satisfaction



PRODUCTION & ENGINEERING CAPABILITY

- ***SAL are able to offer effective total solutions to complex global sourcing & Supply Chain Management issues***
- ***SAL has her own manufacturing and logistics plant, SMS, where production of components and warehousing / shipping are conducted***
- ***SAL manages sub-suppliers who have a wide range of production capacity***
- ***SAL provides various engineering service to the customers in collaboration with SMS, 3rd party lab and sub-suppliers***

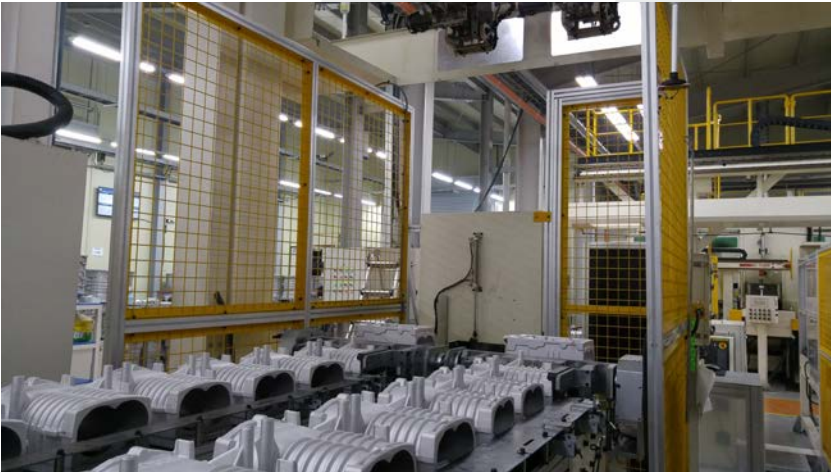
www.sigma-asl.com

SAL Production Capability

Product manufacturing

- Machining - Horizontal/Vertical MCT, CNC etc.
- Outsourced material – Casting & forging etc.
- Assembly, welding, brazing & test etc.
- Proto, Mock-up & Mule sample etc.
- Export packaging etc.

SAL offers a full machining capability for all our OEM customers



SAL Production Capability

Logistics

- Scheduling & Material flow
- Warehousing
- Efficient stock control
- Customs clearance service

SAL offers a complete and professional bespoke logistics service

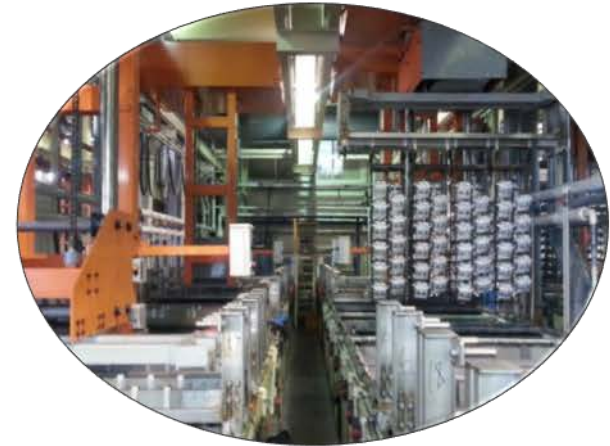


SAL Production Capability

Post Process

- **Surface treatment per CQI 11**
 - **Anodizing, Zinc plating, Phosphating etc.**
 - **E-coating & Powder coating etc.**
- **Heat treatment per CQI 9**
 - **Carbonitriding, Carburizing, Nitriding, Induction hardening etc.**
 - **NT, QT, annealing etc.**

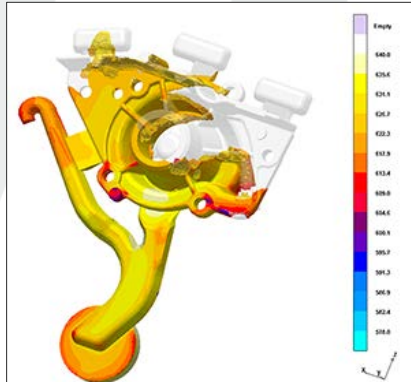
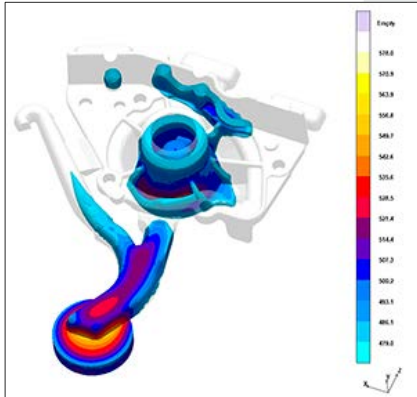
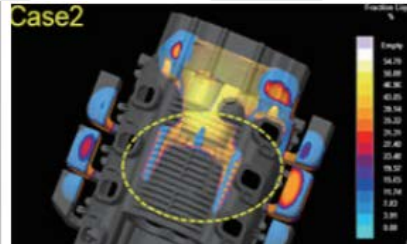
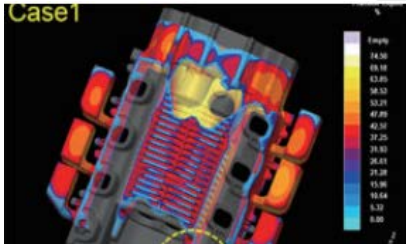
SAL offers various post process per customer's demand



SAL Engineering Capability

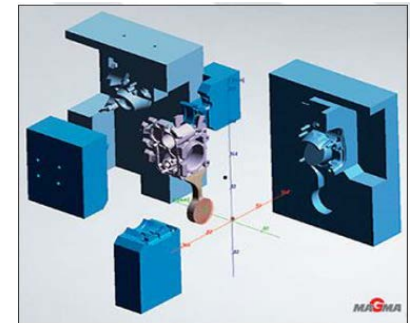
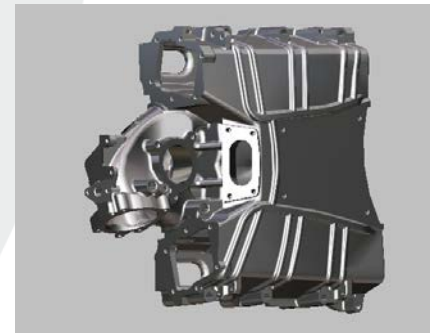
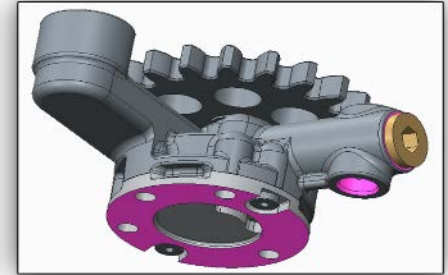
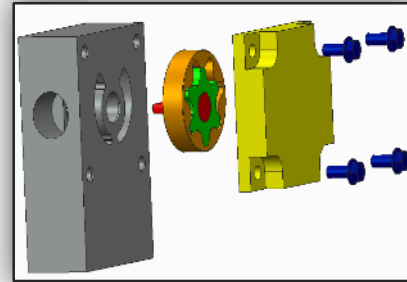
Casting flow analysis

- Simulation
- Strategic collaboration with MAGMA



3D CAD

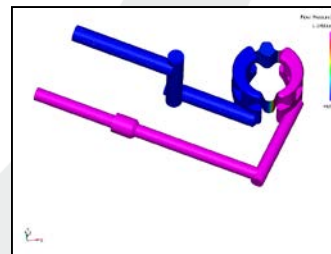
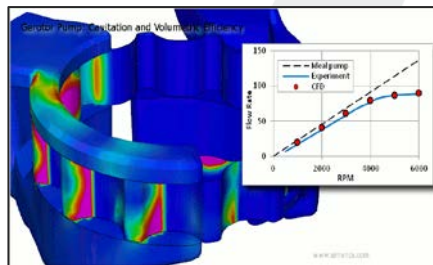
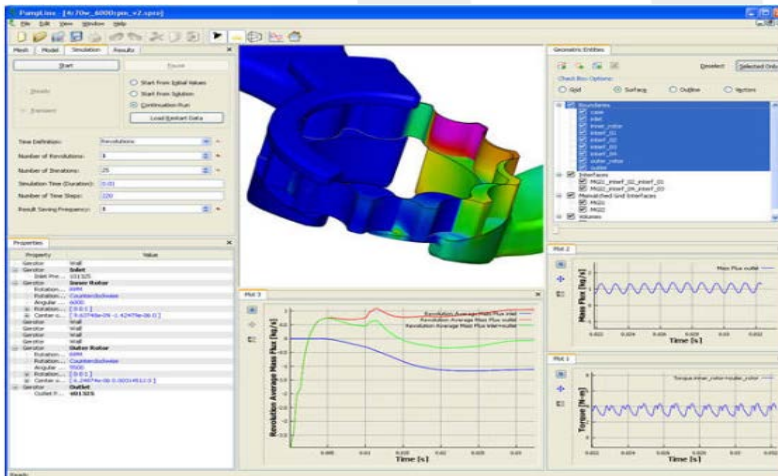
- Capable program
- Pro-E



SAL Engineering Capability

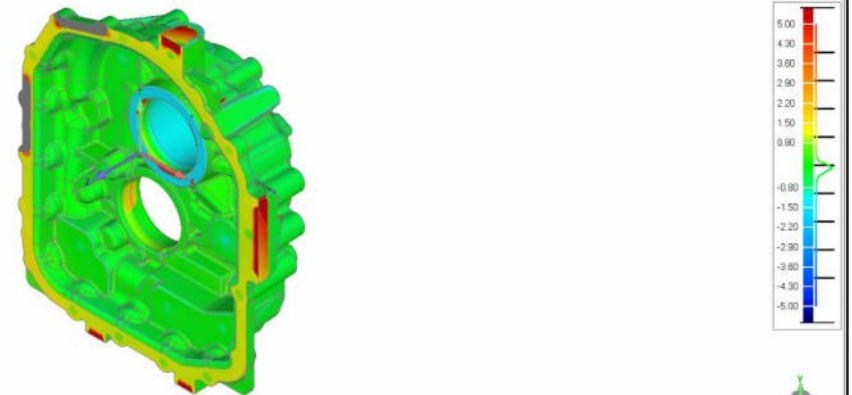
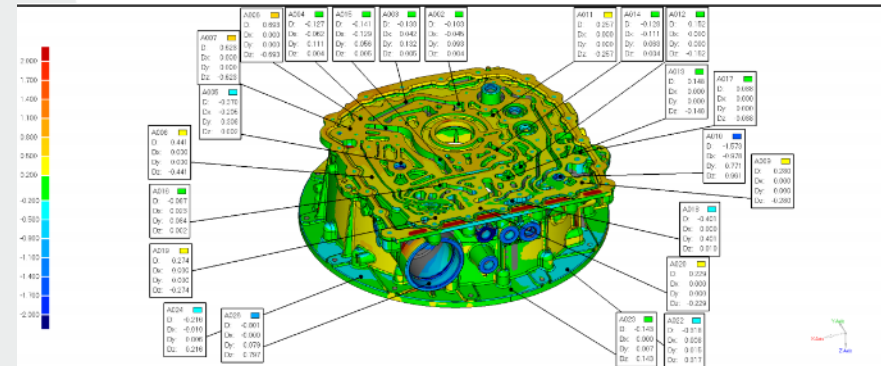
Oil Pump

- Fluid dynamic analysis
 - Capable program – Simerics etc.
- Pump design
 - Rotor – Co-design with 3rd party
 - Others – designed by SMS



3D Scanning

- 3D laser scanning

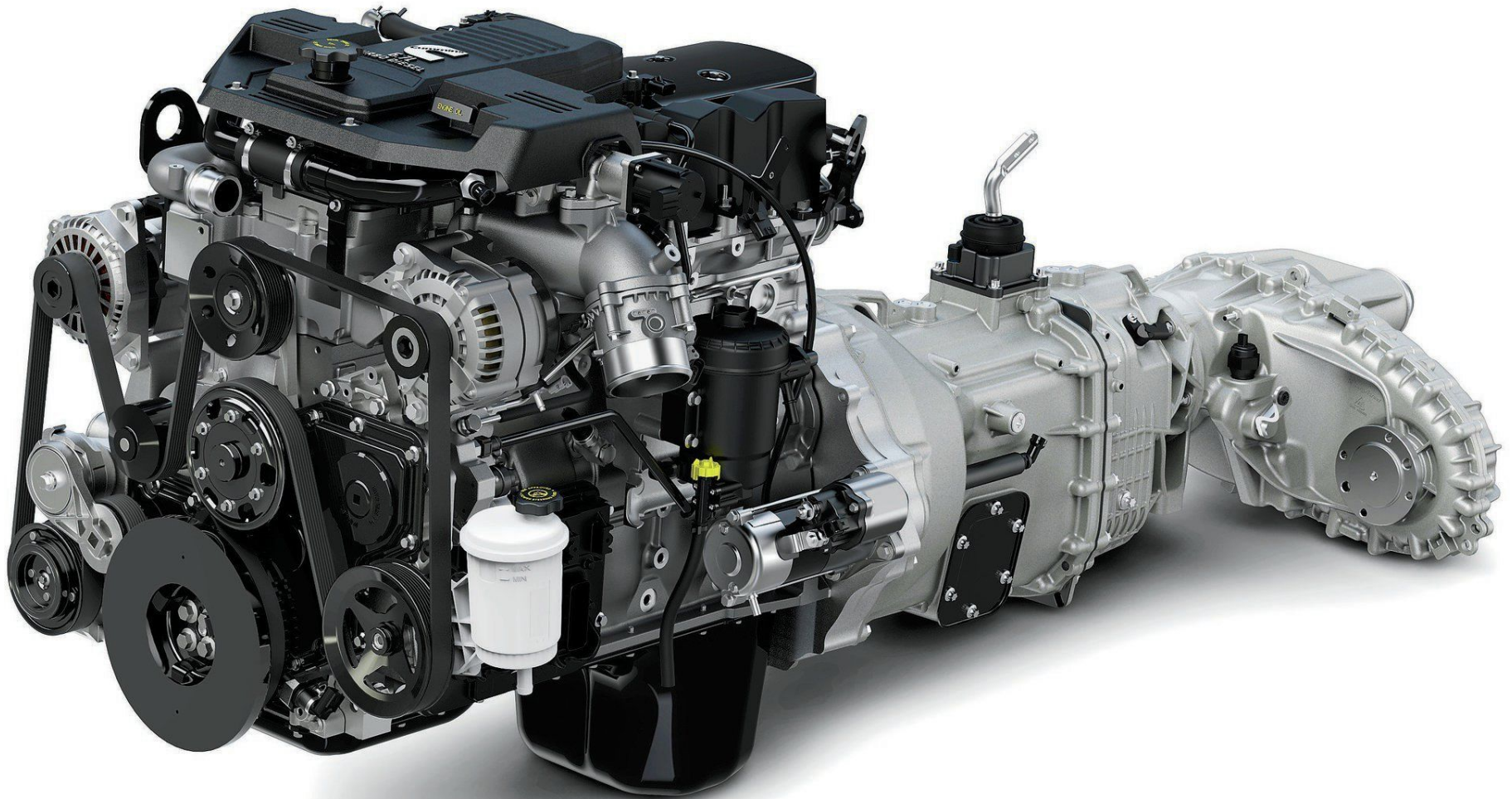


PRODUCTS RANGE

- ***SAL provides various components to customer in collaboration with SMS & sub-suppliers***

www.sigma-asl.com

Products – Engine/Transmission Part



Engine Part

Air management system

- *Intake manifold*

A356-T6



Air management system

- *Supercharger housing*

A356-T6



Air Management System

Air management system

- *Air duct*

A356-T6, A333-F



Air management system

- *EGR duct*

A356-T6



Engine Part

Lubrication system

- Oil pump

A356-T6

Sintered Ge-Rotor



- Flywheel housing

A356-T6



Lubrication System & Covers

Cover & Case

- Bearing retainer

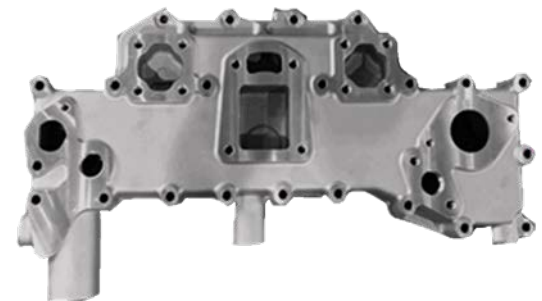
A356-T6



Cover & Case

- CW Cover

A356-T6



Transmission Part

Housing & Case

- Clutch housing(FAS)
A356-T6



Housing & Case

- Clutch housing
A383 HPDC



TM Housing & Case

Housing & Case

- Main case
A356-T6



Housing & Case

- Hybrid motor housing
A356-T6



Transmission Part

Lubrication system

- Oil pump(FAS)

Grey iron casting
Sintered Ge-rotor



Lubrication system

- Oil pump

A383 HPDC
Sintered Ge-rotor



Oil Pump & Yoke

Gear shifting

- Shift Yoke

Steel forging
Welding



Gear shifting

- Yoke bar

Steel turning



Transmission Part

Screw Machined

- Shaft Pinion / Sleeve Valve
- Steel turning



Screw Machined

- Pin hub Ass'y / Drain Plug
- Steel turning



Screw Machined

Screw Machined

- Water Pump Shaft
- Steel turning



Transmission Part

Cover & Others

- Bearing cover(FAS)
- Grey iron



Cover & Others

- Cylinder cover(FAS)
- A356-T6



Cover & Others

Cover & Others

- Fine blanking parts
- Sheet metal



Cover & Others

- Hydraulic & Air tubes
- Sheet metal



Transmission Part

Cover & Others
● Bearing cover
Grey iron



Cover & Others
● Shift Block
● Ductile Iron



Cover & Others

Cover & Others
● Adjust Ring
Grey Iron



Products – Brake Part

Drum Brake
Disk Brake



Brake Part

Drum Brake

- Support, Plate
- Ductile Iron, Zn Plating



Hub

- Hub Forging
- Steel Alloy



Brake system

Disk Brake

- Piston
- Stainless Steel



SAL QUALITY

- ***SAL obtained TS16949 & ISO 14001***
- ***TS 16949 is compulsory for all SAL's sub-suppliers to be partner***
- ***SAL conducted a special control for safety characteristics***

www.sigma-asl.com

Quality

Various quality control equipment



Certificates

CERTIFICATE ENVIRONMENTAL MANAGEMENT SYSTEM

kftq Korean Foundation for Quality

SMS CO., LTD.

REGISTRATION DATE: 2015.11.12
 EXPIRATION DATE: 2018.11.12
 FACILITY NAME: SMS CO., LTD. (SAL KOREA) 1st. Yongin-geon, Gyeonggi-do, Korea (20 code: 0452)

Korean Foundation for Quality certifies that the above organization has been verified and has complied with the requirements of the following standard:

Standard: ISO 14001:2004/KS I ISO 14001:2009

Scope of certification: PRODUCTION OF MACHINED PARTS OF PISTON AND TRANSMISSION FOR AUTOMOTIVE PARTS

1st. Director: Daehyun Nam

1st. Director: Daehyun Nam

1st. Director: Daehyun Nam

ICNet

THE INTERNATIONAL CERTIFICATION NETWORK

CERTIFICATE

ICNet and KFTQ
 hereby certify that the organization

SMS CO., LTD.

HEAD OFFICE & FACTORY: 20, Moonmae-ro 1-dong, Yongsu-gu, Seoul, Korea (20 code: 0452)

for the following field of activities:

PRODUCTION OF MACHINED PARTS OF PISTON AND TRANSMISSION FOR AUTOMOTIVE PARTS

has implemented a 1st. International Environmental Management System which fully conforms with the requirements of the following standard:

ISO 14001:2004

Issued on: 2015-11-12

Valid until: 2018-11-12

Registration Number: KR - 05429 - (00)

1st. Director: Daehyun Nam

1st. Director: Daehyun Nam

1st. Director: Daehyun Nam

Certificate of ISO 14001

CERTIFICATE QUALITY MANAGEMENT SYSTEM

kftq Korean Foundation for Quality

SMS CO., LTD.

REGISTRATION DATE: 2015.08.04
 EXPIRATION DATE: 2017.08.07
 FACILITY NAME: SMS CO., LTD. (SAL KOREA) 1st. Yongin-geon, Gyeonggi-do, Korea (20 code: 0452)

Korean Foundation for Quality certifies that the above organization operates the Quality Management System and complies with the requirements of the following standard:

Standard: ISO/TS 16949:2009

Scope of certification: PRODUCTION OF MACHINED PARTS OF ENGINE AND TRANSMISSION (EXHAUSTION MANIFOLD) - 1st. PRODUCT DESIGN & DEVELOPMENT

1st. Director: Daehyun Nam

1st. Director: Daehyun Nam

1st. Director: Daehyun Nam

APPENDIX

kftq Korean Foundation for Quality

SMS CO., LTD. HEAD OFFICE AND FACTORY SUPPORTING FUNCTION

REGISTRATION DATE: 2014.03.09
 EXPIRATION DATE: 2017.03.07
 FACILITY NAME: SMS CO., LTD. (SAL KOREA) 1st. Yongin-geon, Gyeonggi-do, Korea (20 code: 0452)

SUPPORTING SITE: SAL KOREA

ADDRESS: 51, Dulsan-ro, Yongsu-gu, Seoul, 14585, Korea

SUPPORTING FUNCTION: SALES, PURCHASING, SUPPLIER MANAGEMENT

1st. Director: Daehyun Nam

1st. Director: Daehyun Nam

1st. Director: Daehyun Nam

Certificate of ISO 9001 & TS 16949

Quality

Special Control of safety characteristics
– Non destructive test

X-ray scan



Dye penetration check

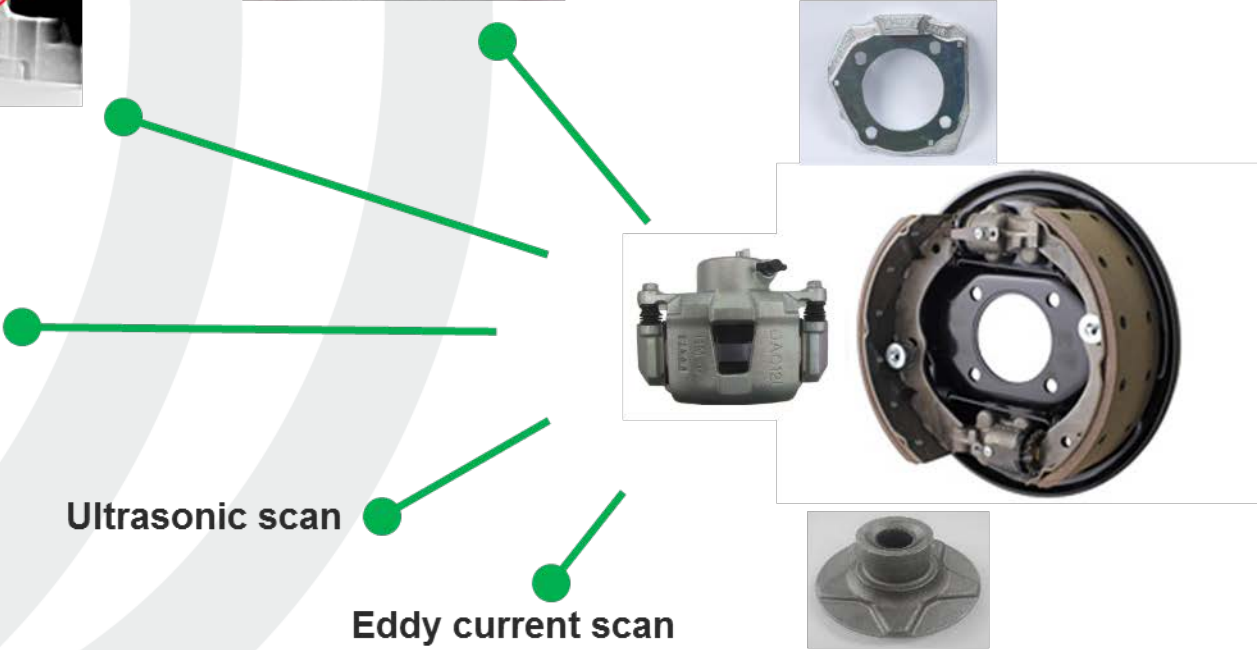


Magnetic particle check



Ultrasonic scan

Eddy current scan



Contact

UK office

Mr. Greg Lynch

+44 7771 911227

glynch@thesalgroup.com

Korea Office

Mr. Kira Hong

+82 10 3320 2520

krhong@sigma-asl.co.kr